

## ULTRA PRIVATE SINGLE STORY GRANADA HILLS HOME!

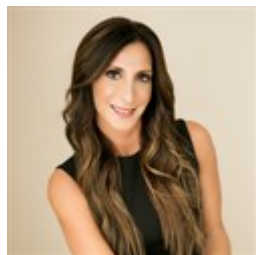


\$ 975,000



12700 Woodley Ave, Granada hills, CA 91344

- » Beds: 4 | Baths: 2 Full
- » MLS #: SR25063695
- » Single Family | 1,592 ft<sup>2</sup> | Lot: 17,393 ft<sup>2</sup>
- » Located in coveted Granada Hills, adjacent to Knollwood Estates.
- » Set back up from street with private long driveway, allows for privacy.
- » More Info: [12700WoodleyAve.com](http://12700WoodleyAve.com)



Diana Hagopian  
(818) 581-1839 (Direct)  
[homesbyrealtordiana@gmail.com](mailto:homesbyrealtordiana@gmail.com)  
<http://DianaHagopian.com>

**PINNACLE**  
ESTATE PROPERTIES, INC.

Pinnacle Estate Properties Inc  
20065 Rinaldi St  
Suite #210  
Porter Ranch, CA 91326  
(818) 581-1839

### A Rare Private Retreat Near Knollwood Country Club Estates

Welcome to this ultra-private, single-story gem, nestled in the highly sought-after Knollwood Country Club Estates area. Tucked away behind a long, private driveway, this home offers a serene and secluded setting, perfect for those seeking both tranquility and convenience.

Step inside to find a charming living room with soaring vaulted ceilings and a cozy fireplace—an inviting space to relax and unwind. The bright and airy eat-in kitchen, also featuring vaulted ceilings, seamlessly connects to the private backyard through sliding glass doors, creating an effortless indoor-outdoor flow.

The primary suite is a peaceful retreat, complete with vaulted ceilings, two spacious closets, and picturesque views of the lush yard. Three

